

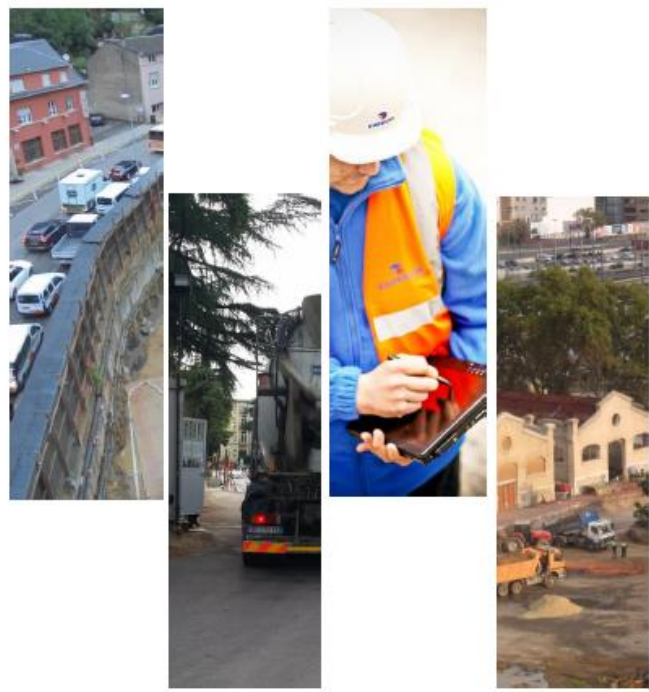


Good practices guide : Construction logistics and supply chains



Good practices guide:
Construction logistics and
supply chains

April 2017



This project has received funding from the European Union's Horizon 2020 research and innovation programme under grant agreement No 635898.

2020
EUROPEAN UNION

More than 20 good practices from EU and USA, explained with real-world examples including relevant information to understand at a glance its purpose, its main characteristics, the results it helps to achieve and how it can be adapted to new applications.

Indications of cost, time and difficulty to implement the practice.

Classified by area of interest: logistics operations (LO), policies (PO), advanced technologies (IT) and integrated supply chains (SC).

Mainly aimed at construction companies, transport & logistics operators and local authorities.

Download
the guide

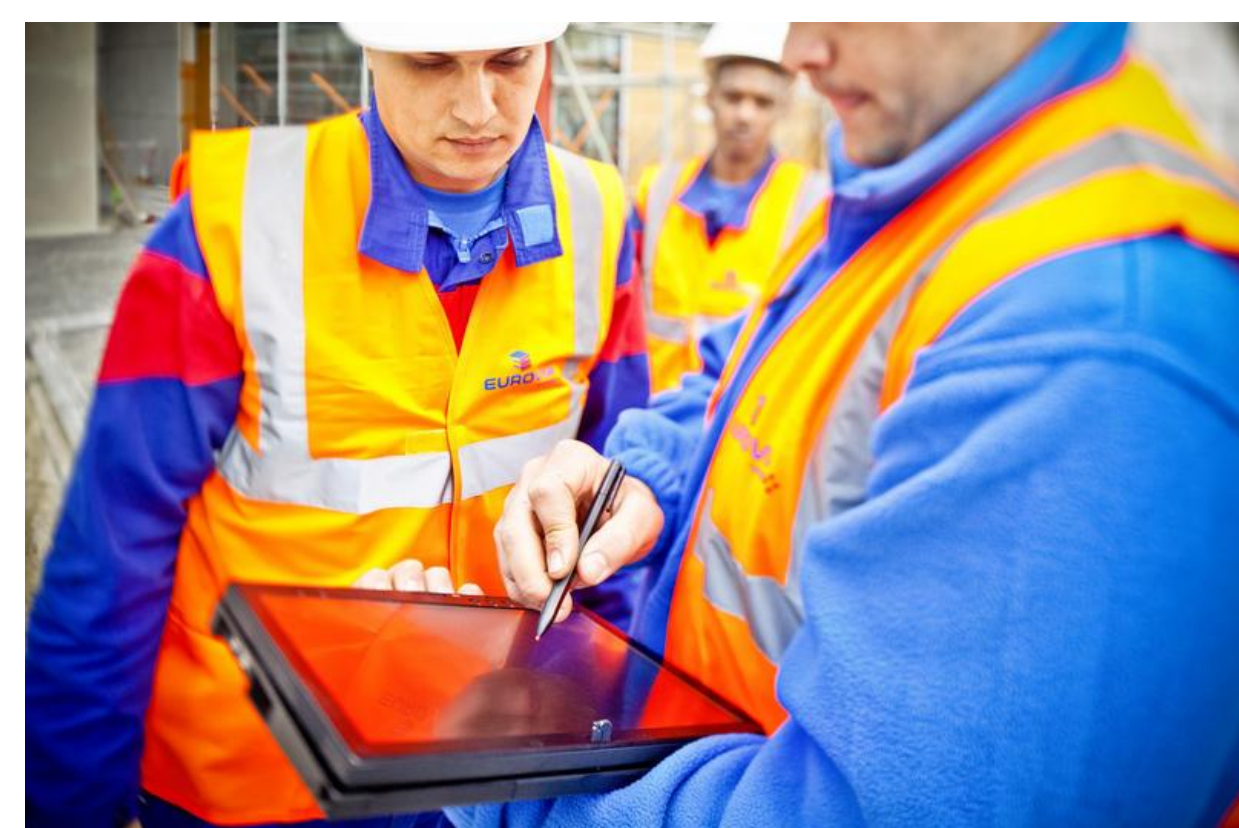


LO1 – Logistics team

Get some tips to organise staff on construction site and improve operations when it comes to coordinate material flows across all sub-contractors.

Read the practice to find out about the roles and responsibilities of the three dedicated logistics teams:

- the management team
- the delivery team
- the removal team



Logistics team

Source: Vinci Construction France

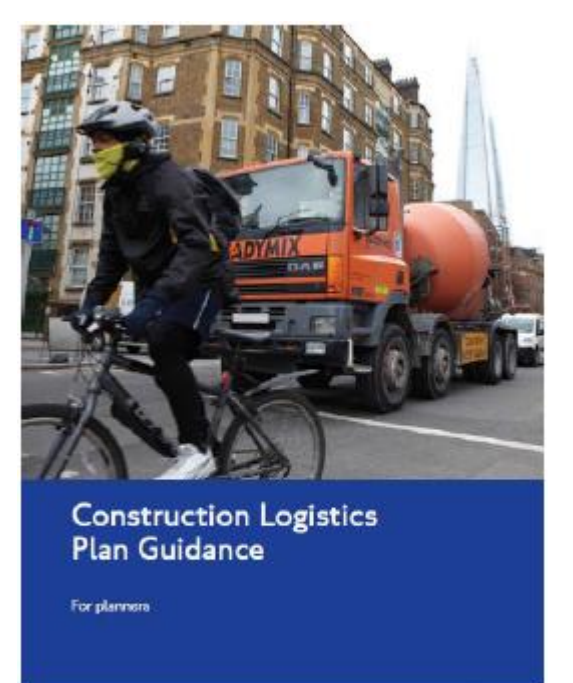
Cost Time Difficulty

PO1 – Construction Logistics Plan (CLP)

Discover how Transport for London tackles the impact of construction traffic on local communities in relation to congestion, pollution and noise with the CLP.

The CLP, a tool for:

- planners
- developers
- construction contractors

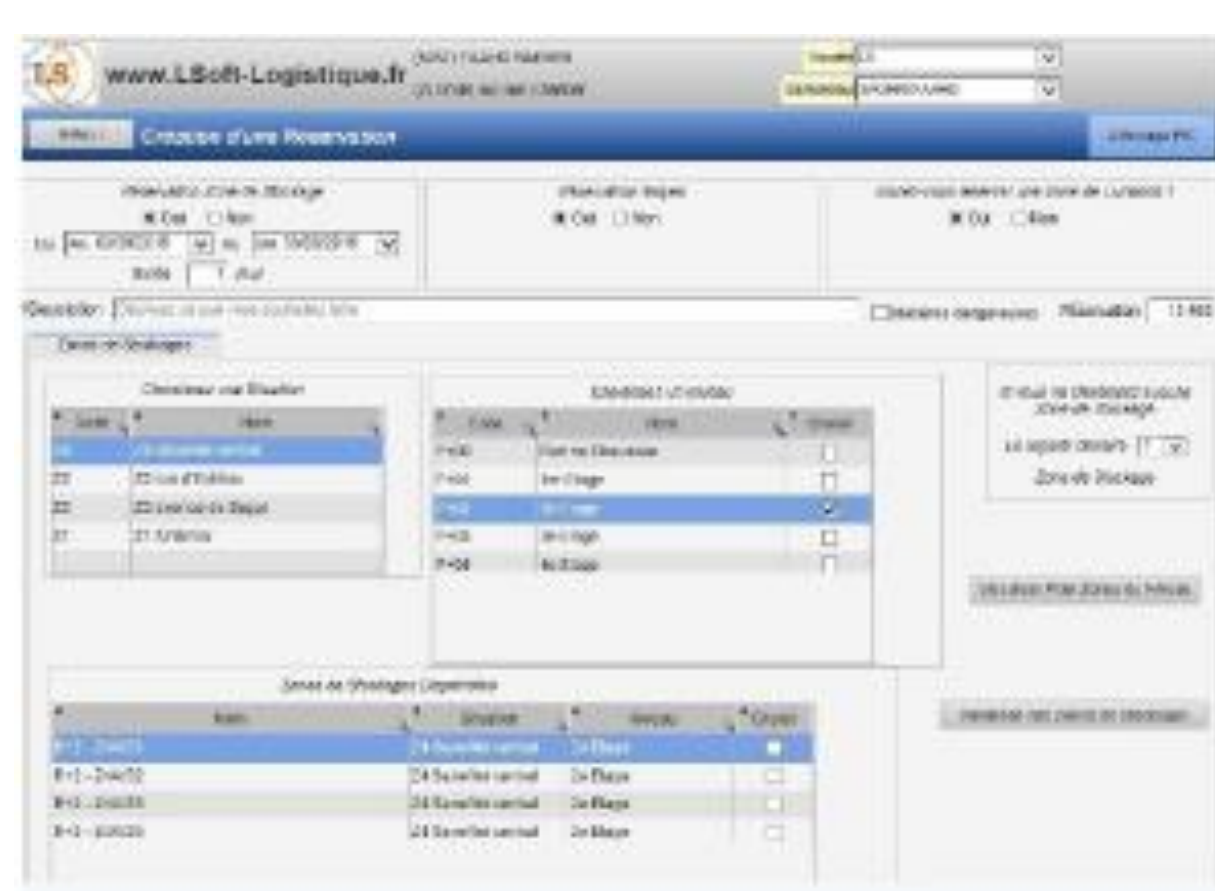


Construction Logistics Plans (for planner and for developer)
Source: Transport for London

Cost Time Difficulty

IT2 – Delivery area booking system

Understand via a practical experience in Paris how a construction contractor improves delivery operations via an online booking system.



Booking request

Source: Vinci Construction France

A booking system is used to reserve:

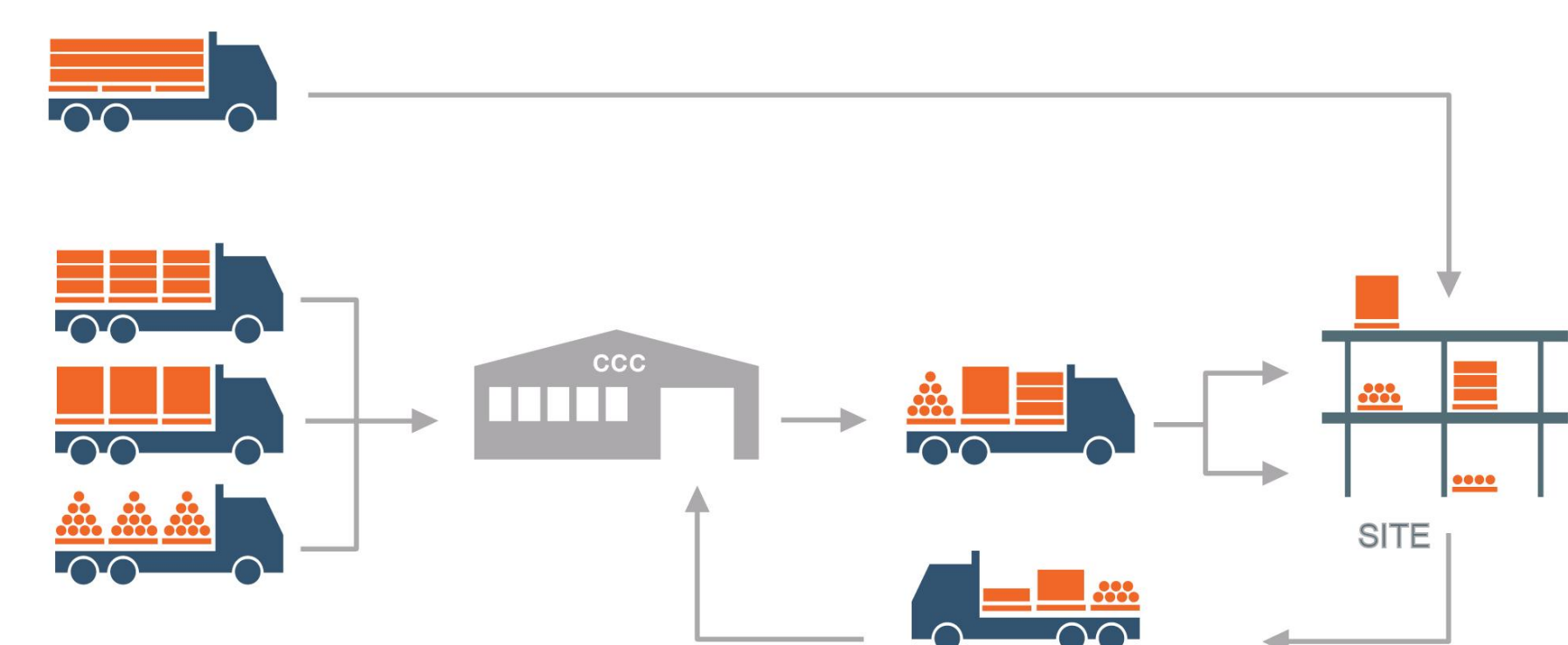
- a guaranteed delivery space
- material-handling equipment
- a storage area

Cost Time Difficulty

SC1 – Construction Consolidation Centre (CCC)

Discover in this good practice several examples of CCCs:

- A temporary CCC (2001 – 2010) in Stockholm for a new housing district with 8,000 apartments and thousands of new office spaces in a former harbour area
- Permanent and temporary CCCs in London for various construction sites including the Heathrow Airport's terminals



Delivering through a Construction Consolidation Centre
Source: Transport for London

Cost Time Difficulty



Successful- Action plan helps you find measures that fit your construction project.
Coming soon on our website

www.success-urbanlogistics.eu

